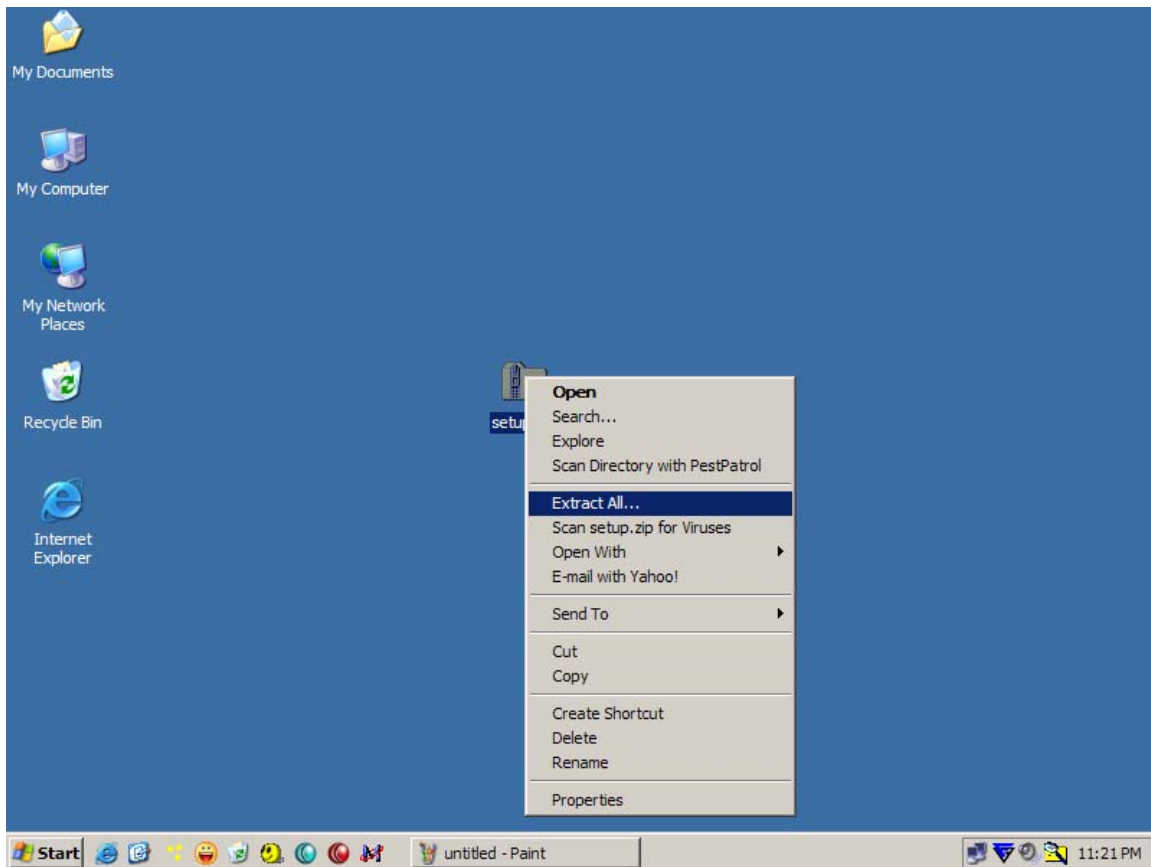
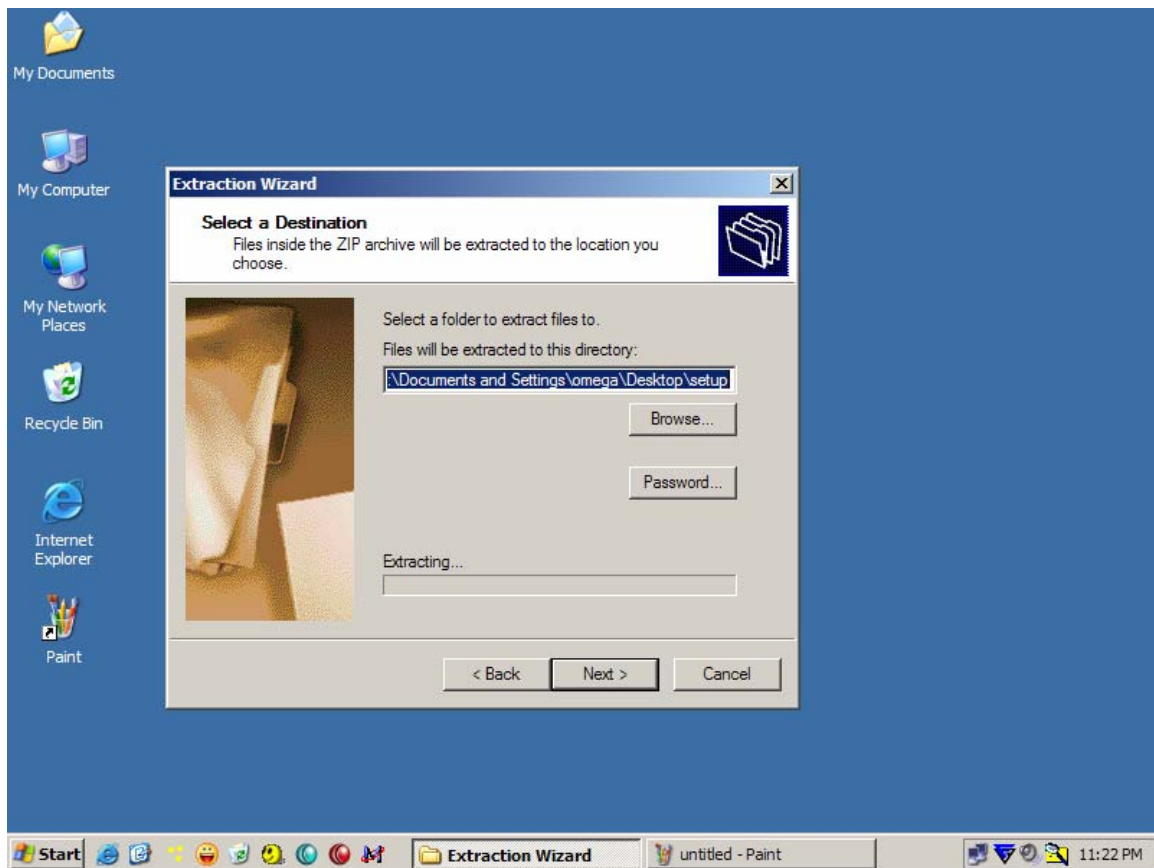


INSTALLING THE SOFTWARE

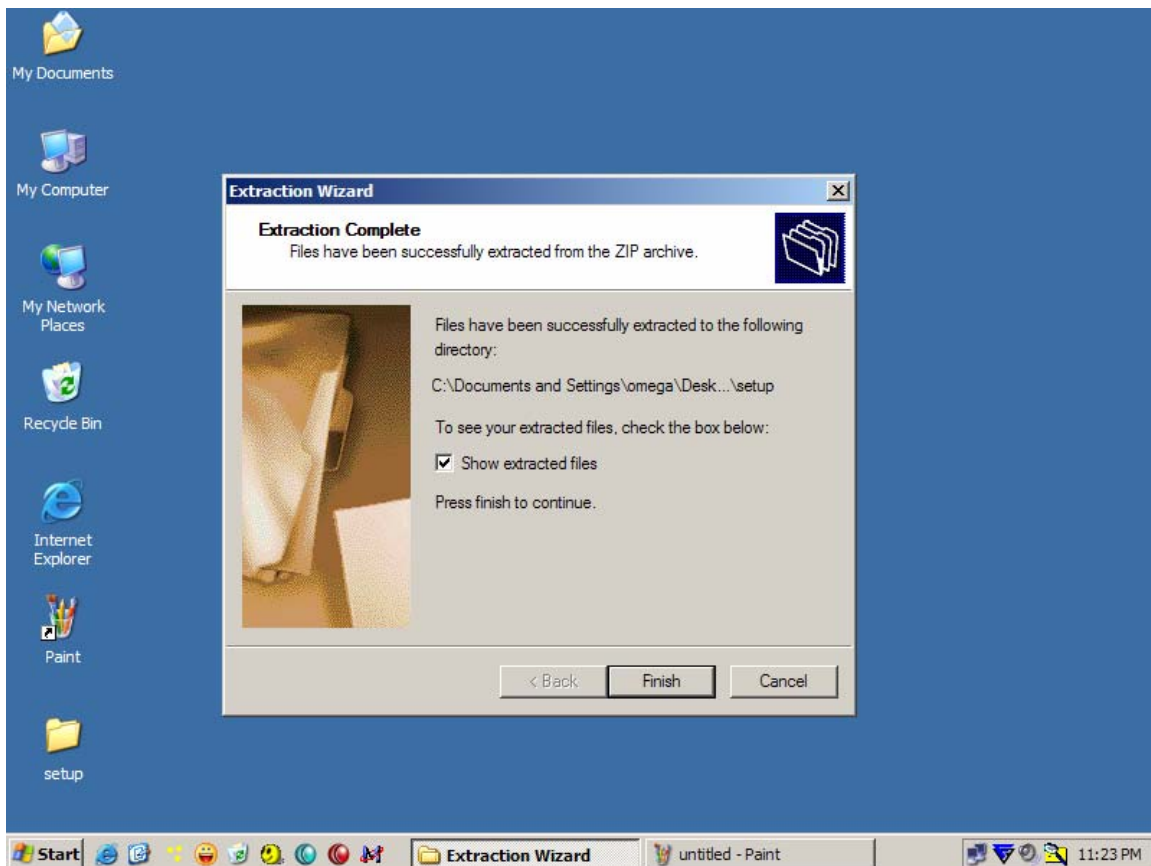
Save the yahcamview.v3.1.0.zip file from your email to your Desktop.



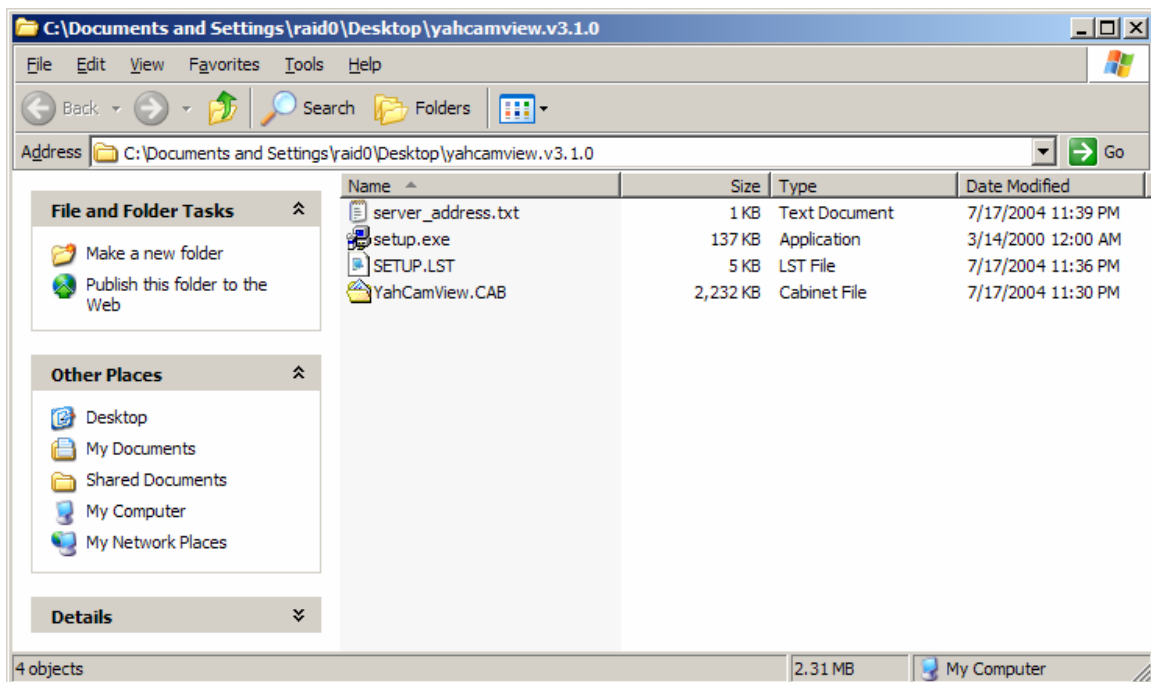
Right Click on the Zip file and accept the default path for the location to extract the files. Windows XP has built in Zip file support. Windows 2000 users need to download Winzip from www.winzip.com if you cannot currently work with Zip files.



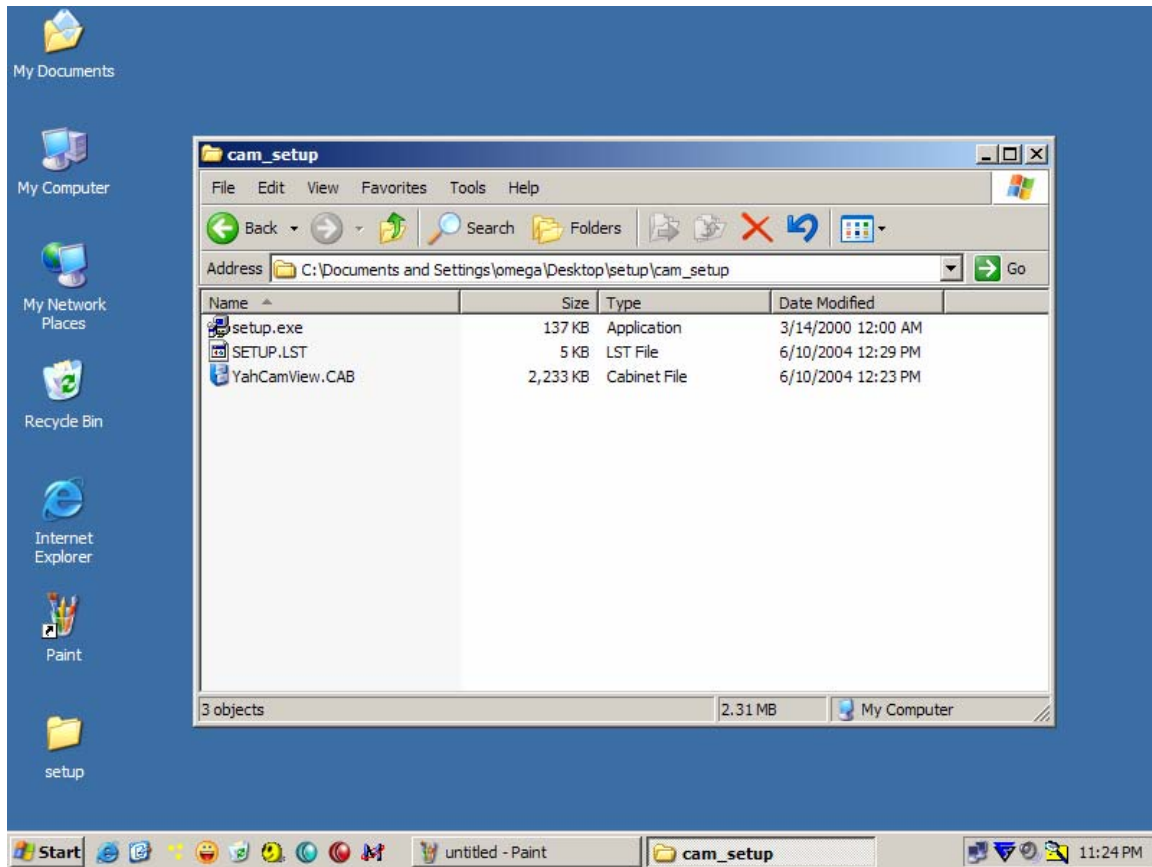
Select Finish and you should have an open folder on your desktop.



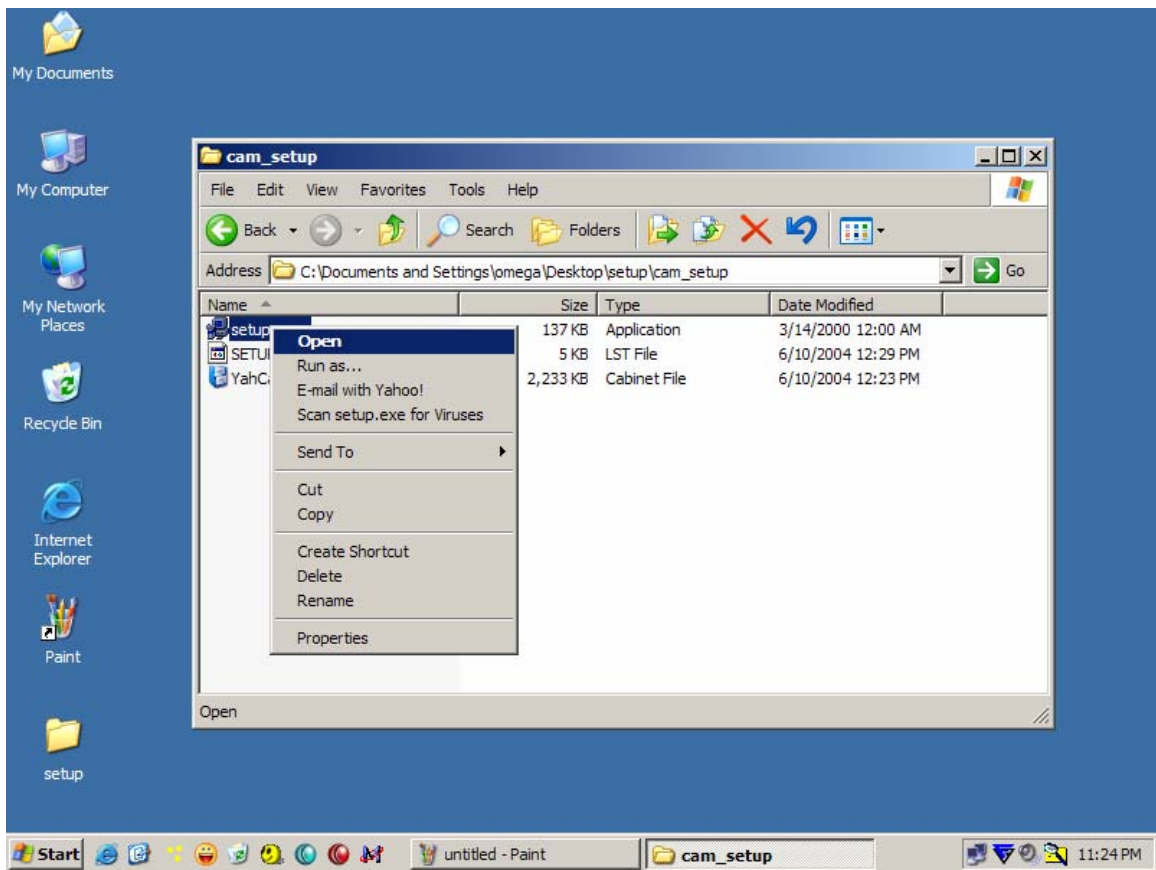
Open the “yahcamview.v3.1.0” folder.



Double click the setup.exe file.

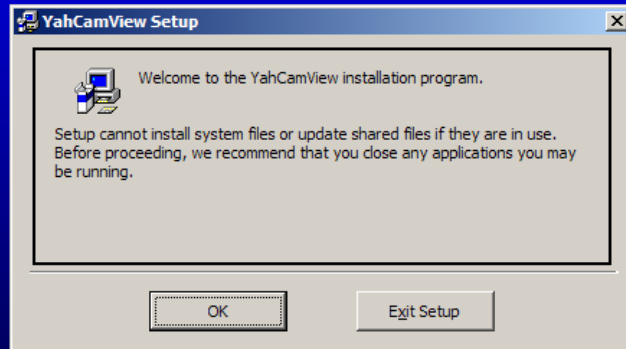


Or Right Click and select Open.



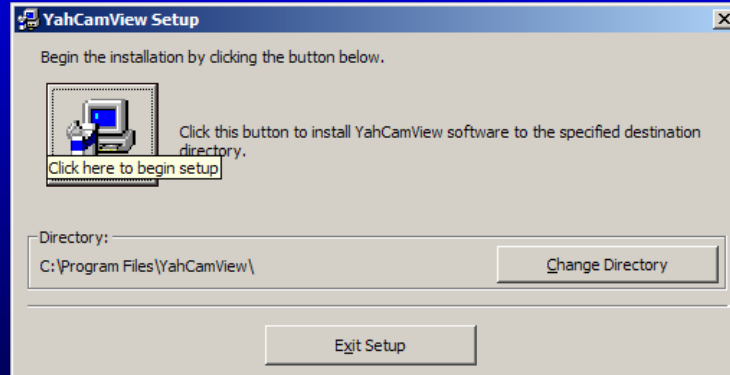
Click OK to start the installation.

YahCamView Setup



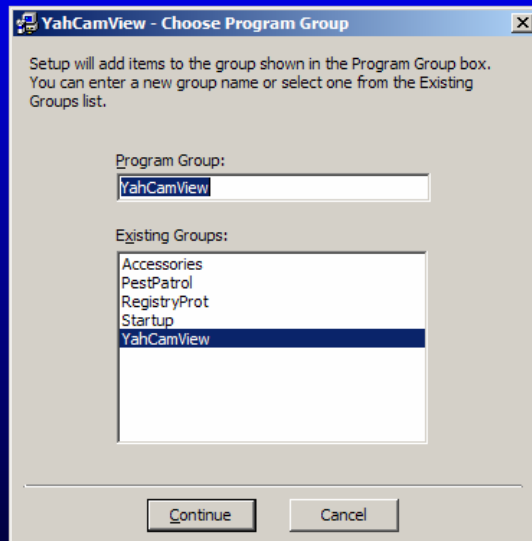
Click the Computer Icon to continue the install. Do not change the install path to another location.

YahCamView Setup



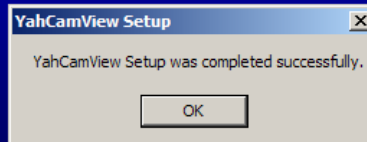
Select Continue.

YahCamView Setup

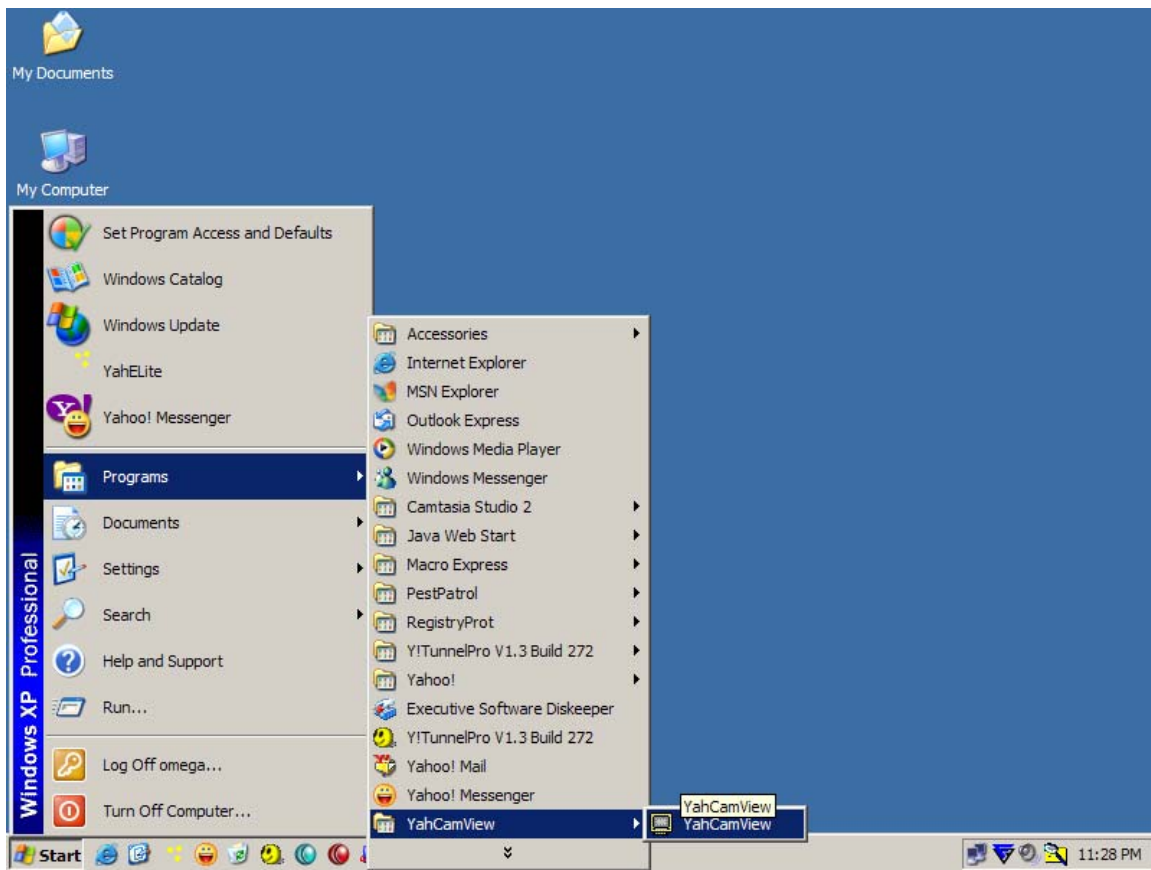


Click OK

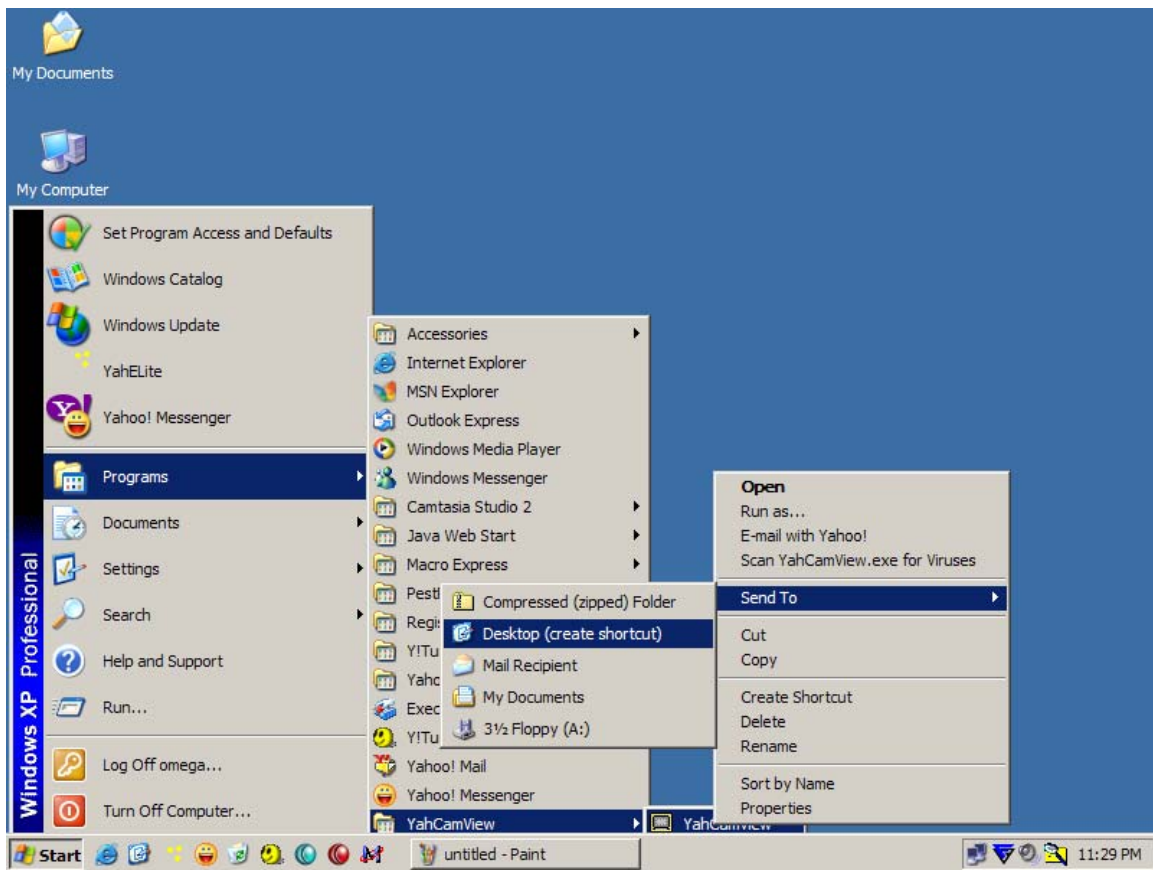
YahCamView Setup



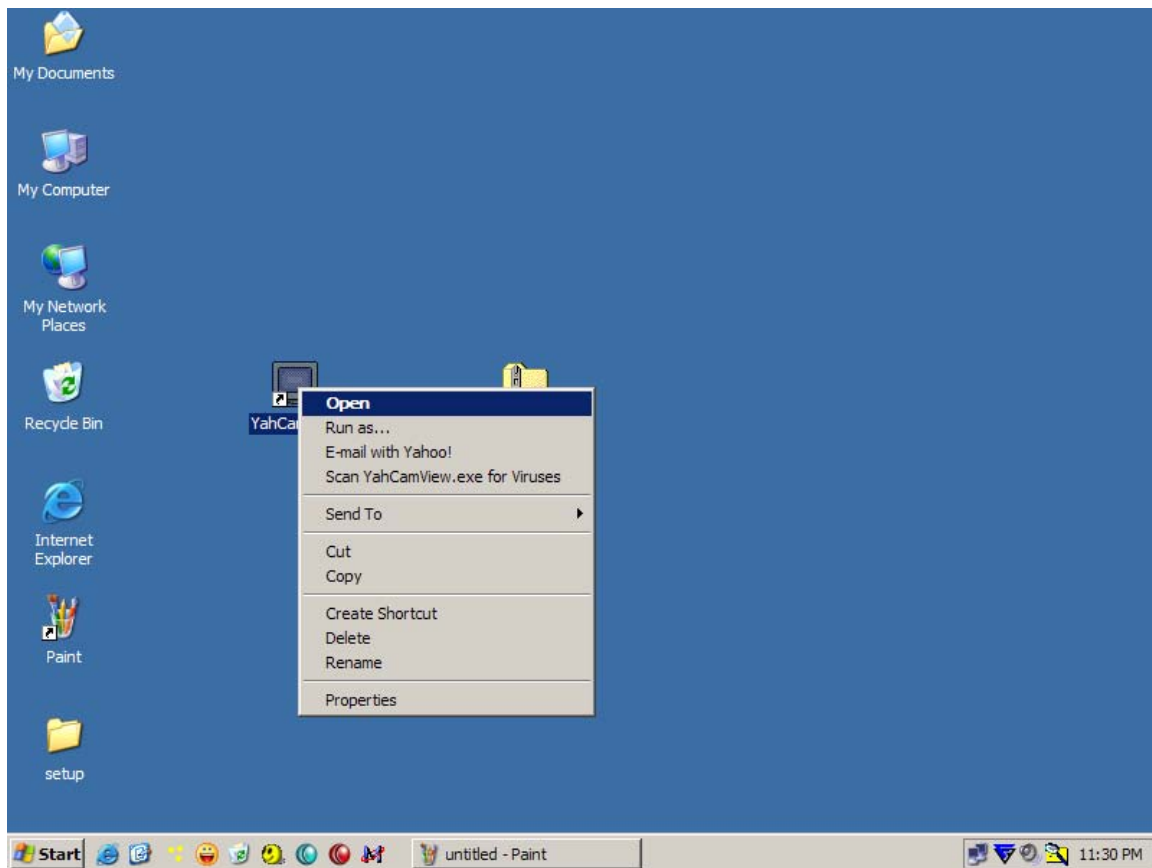
Click your Windows Start Button and browse to the location of the YahCamView icon on the Start Menu. It will now be listed under "Programs." That "down arrow" in the picture below means that personalized menus are turned on and you may have to click that arrow to find the YahCamView icon.



Once you get your mouse positioned over the YahCamView icon, Right Click, and choose “Send To” and then “Desktop (Create Shortcut).”

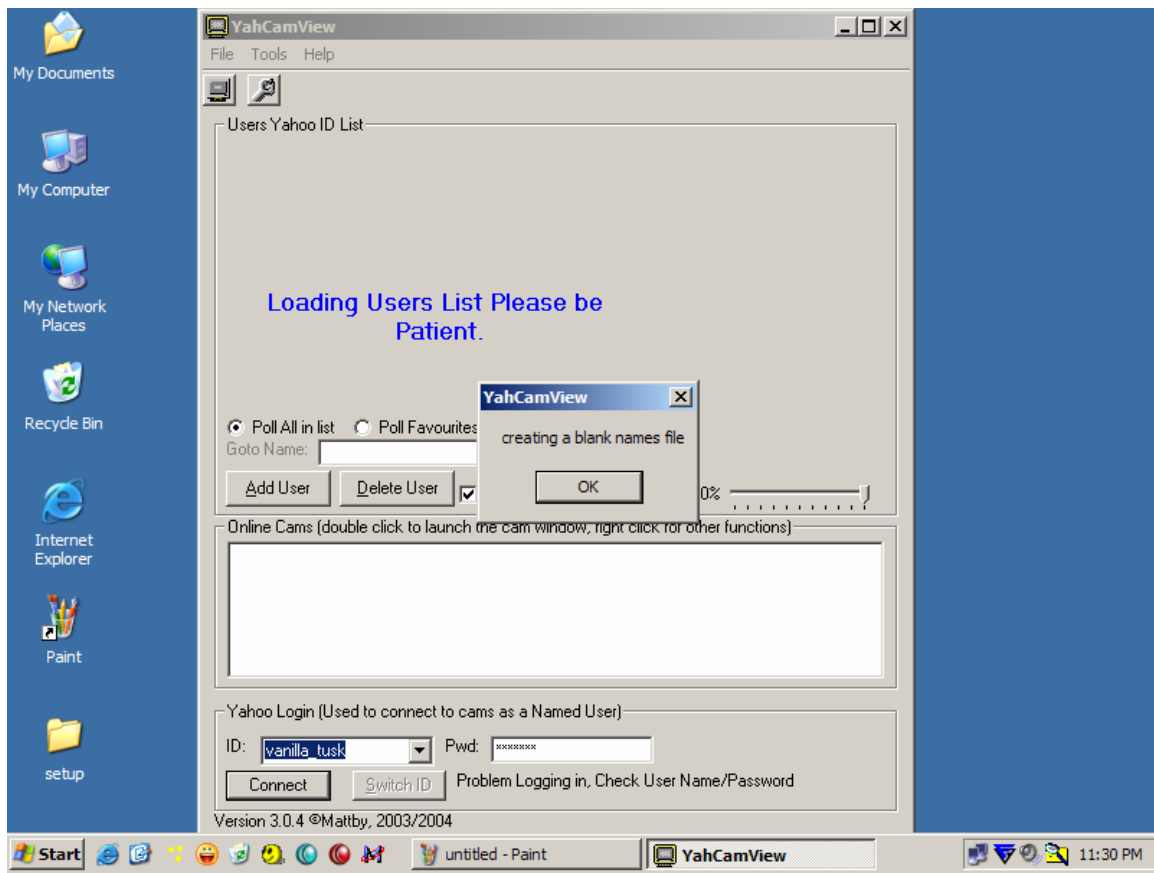


Double Click the program icon now on your desktop.

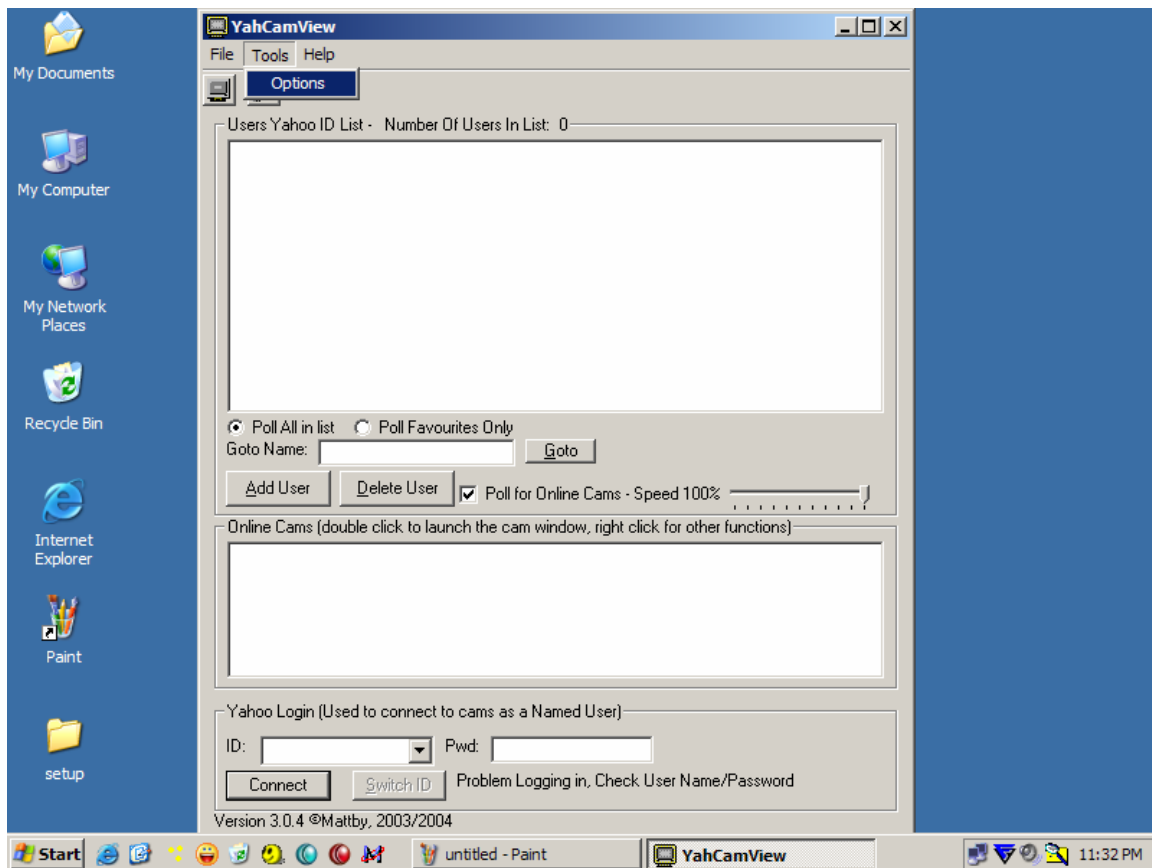


The program will launch and report that is creating a blank names file (database of names), because it does not currently have any “User Names” to scan yet.

Click OK, and then remove the check mark from “Poll for Online Cams.”

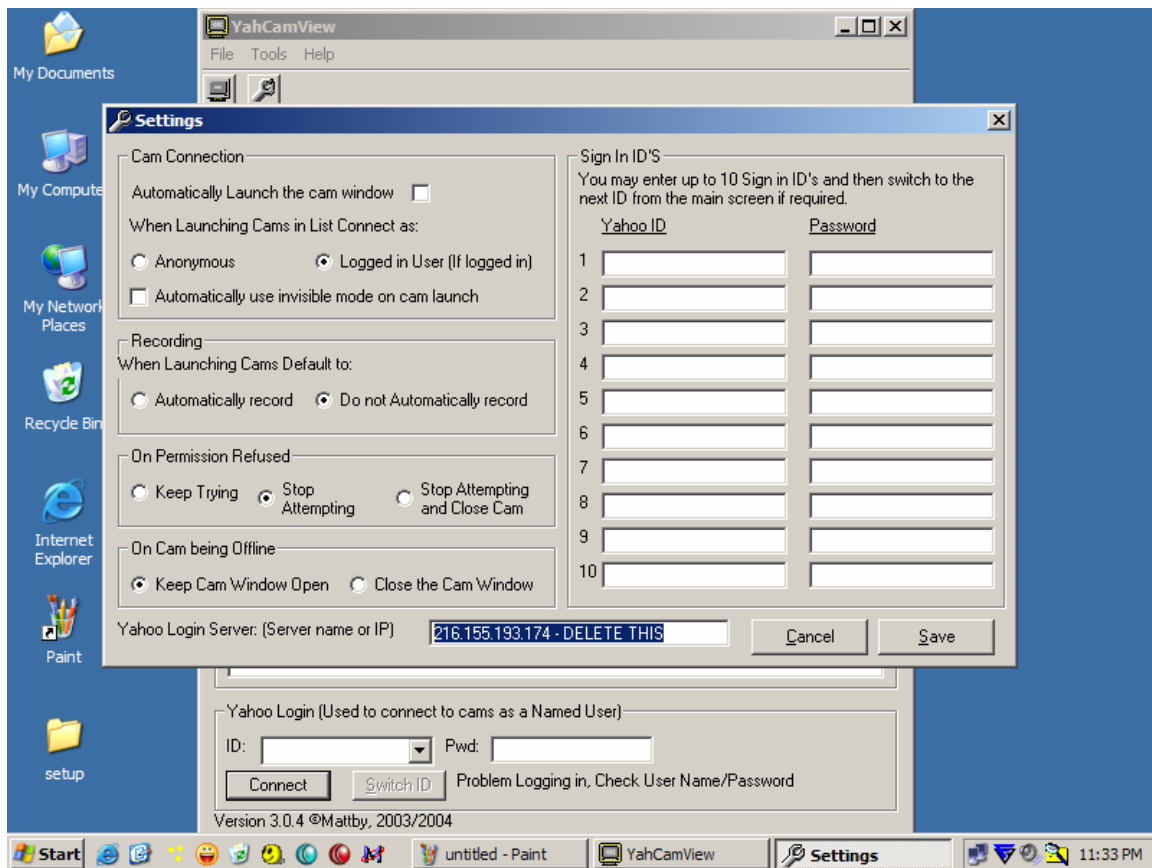


Click on the “Tools” menu button, and then select “Options.”

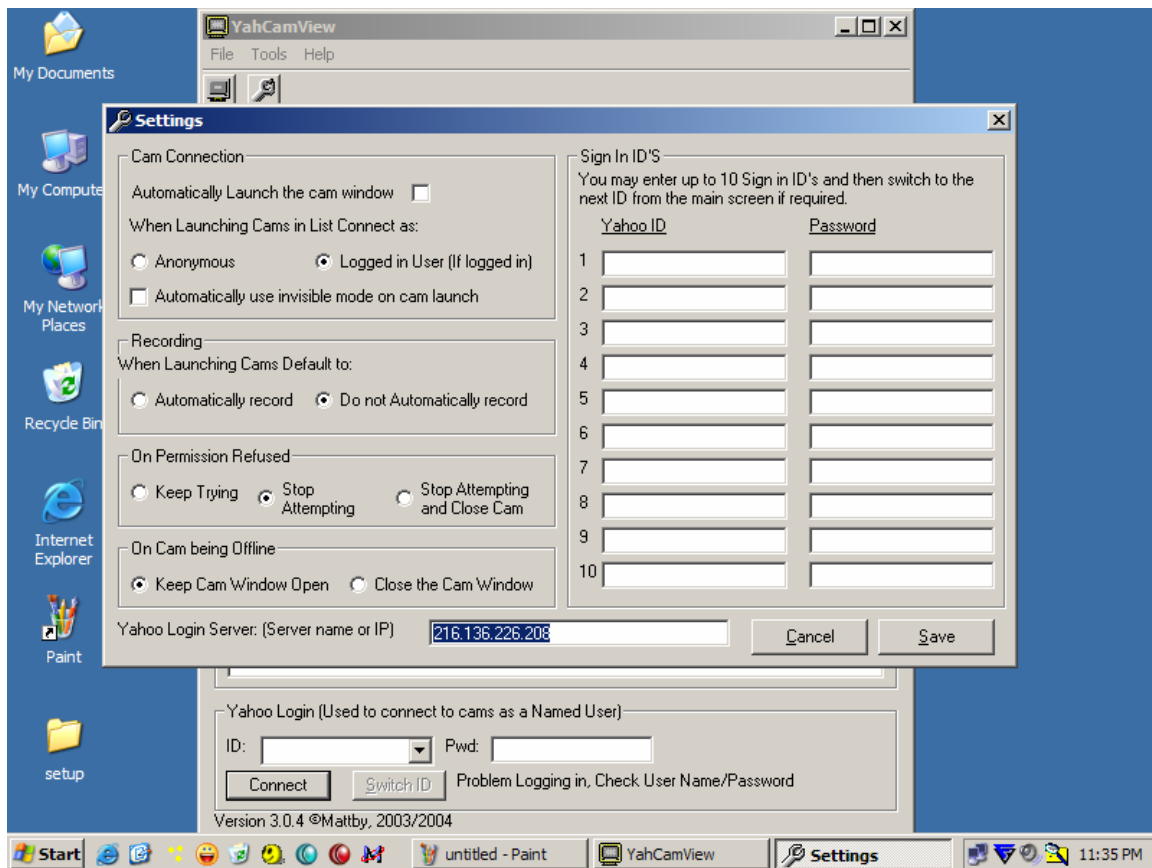


Delete the old “Yahoo Login Server” address at the bottom of the Options screen. Do not do anything else in here right now, or change any other settings.

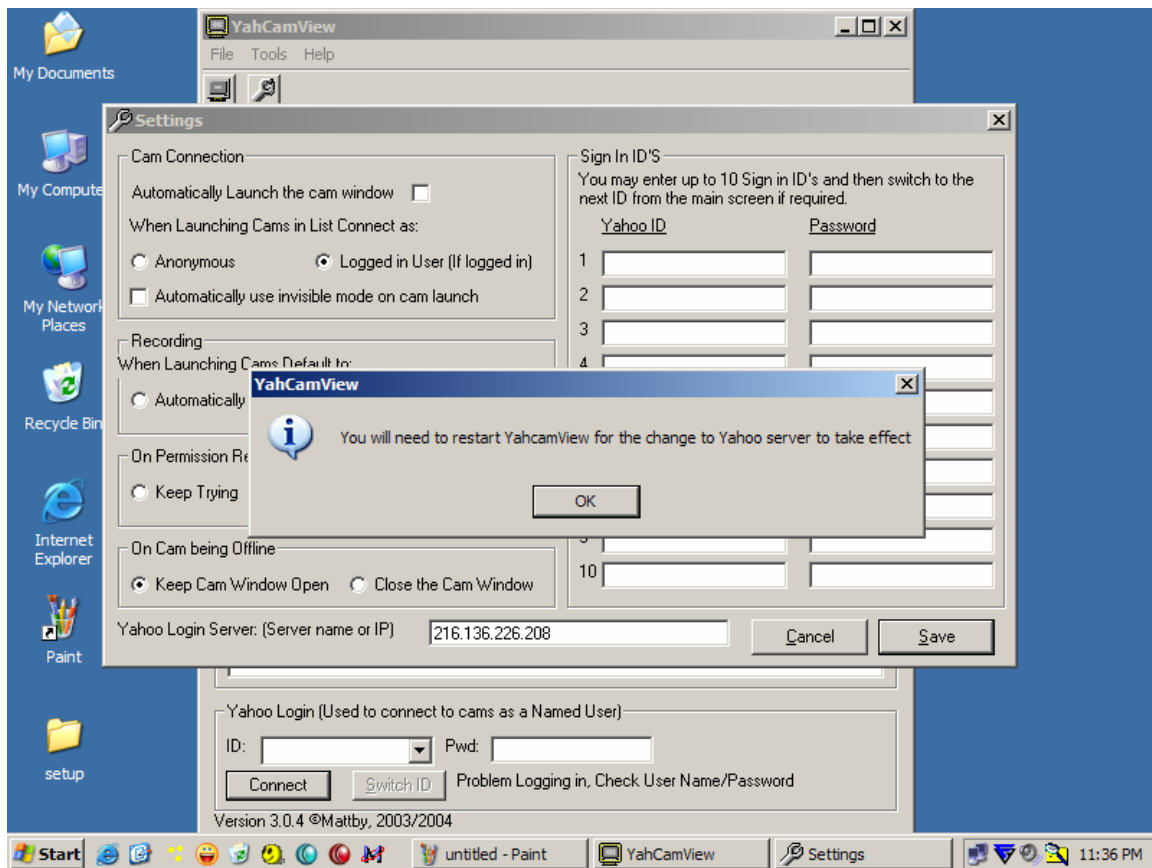
DO NOT add any “Login ID’s (screen names) yet.



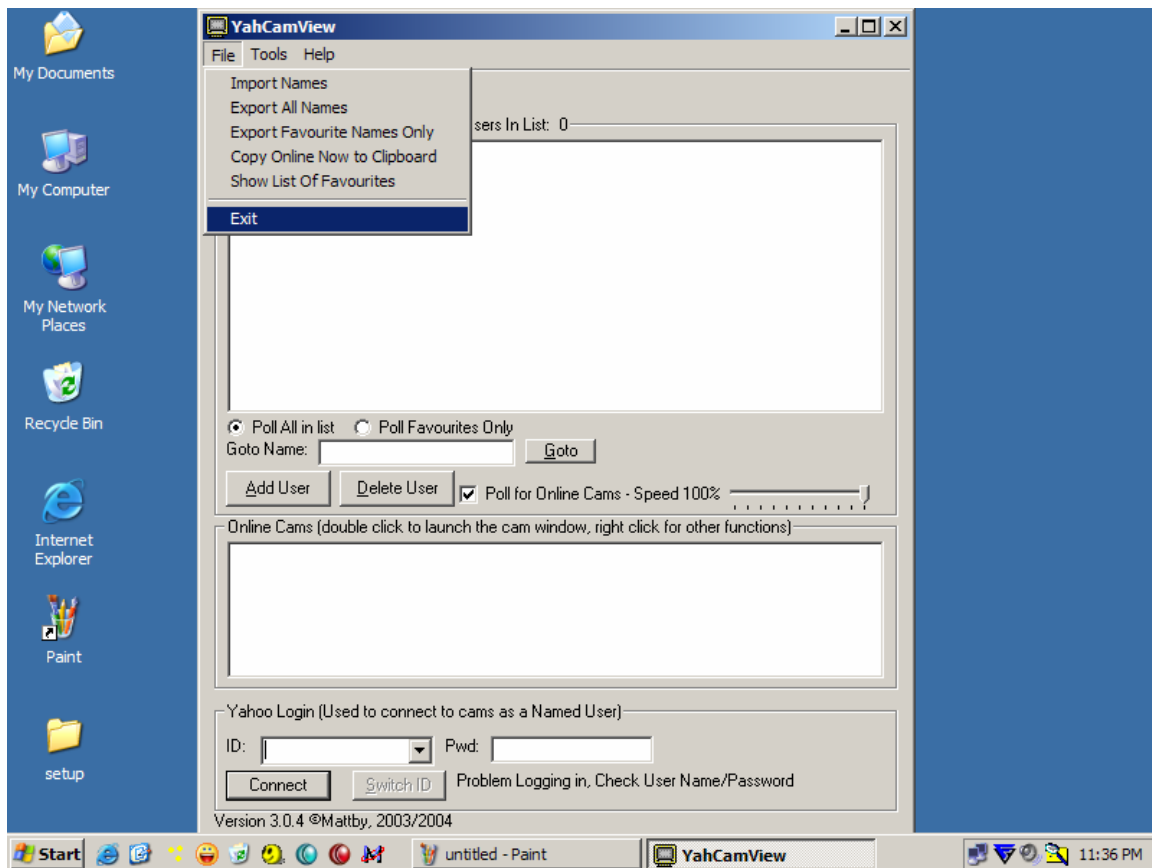
Add the new server address of: **cs42.msg.dcn.yahoo.com**



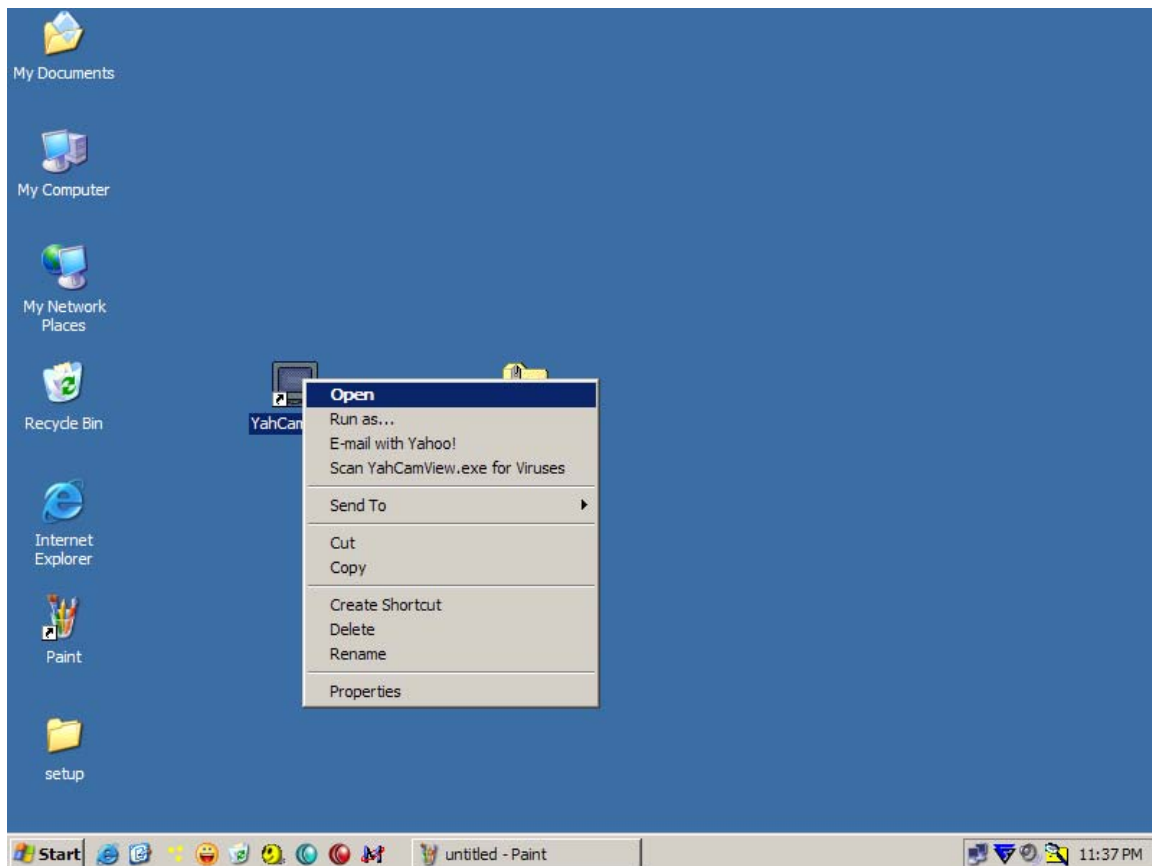
Select "SAVE" and click "OK"



Exit the program by choosing “File” and then “Exit,” or by just clicking the “X” in the top, right hand corner.



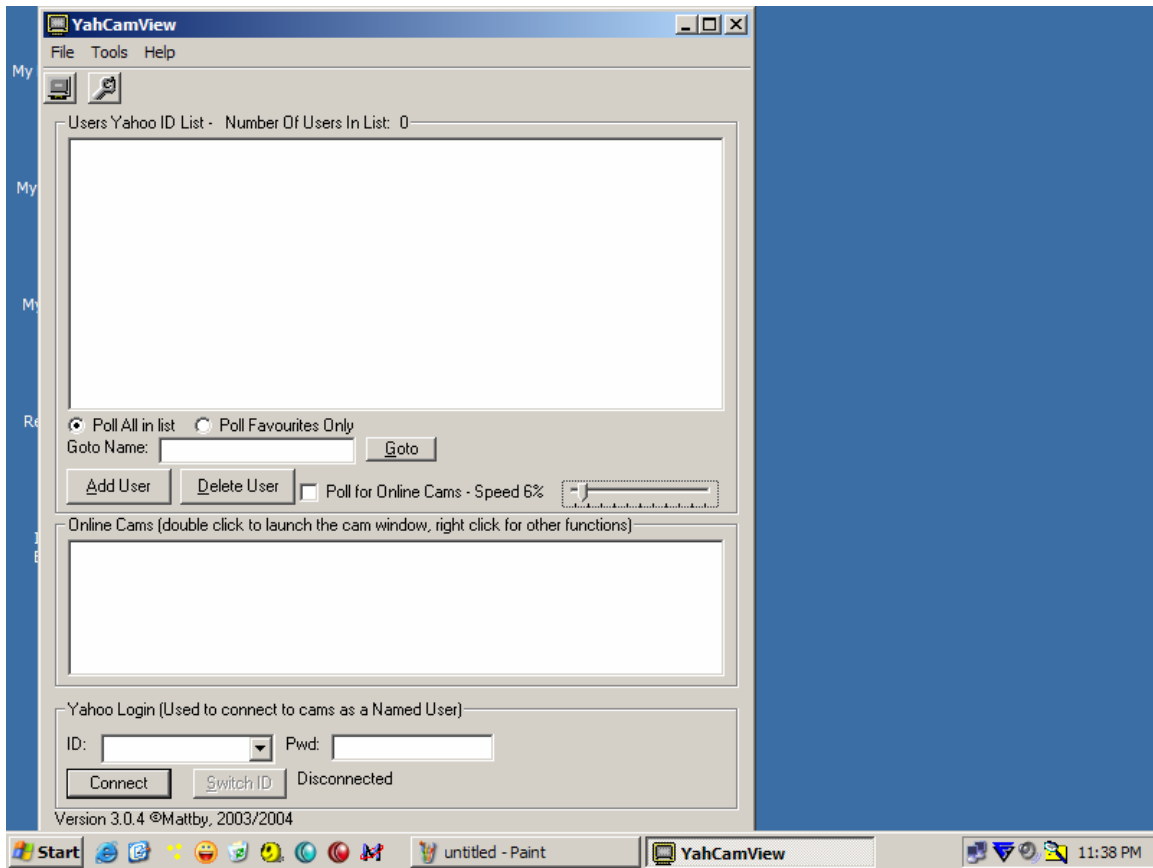
Wait 30 seconds to give the program a chance to clear from the system memory, and then “Double Click” the YahCamView icon to restart it.



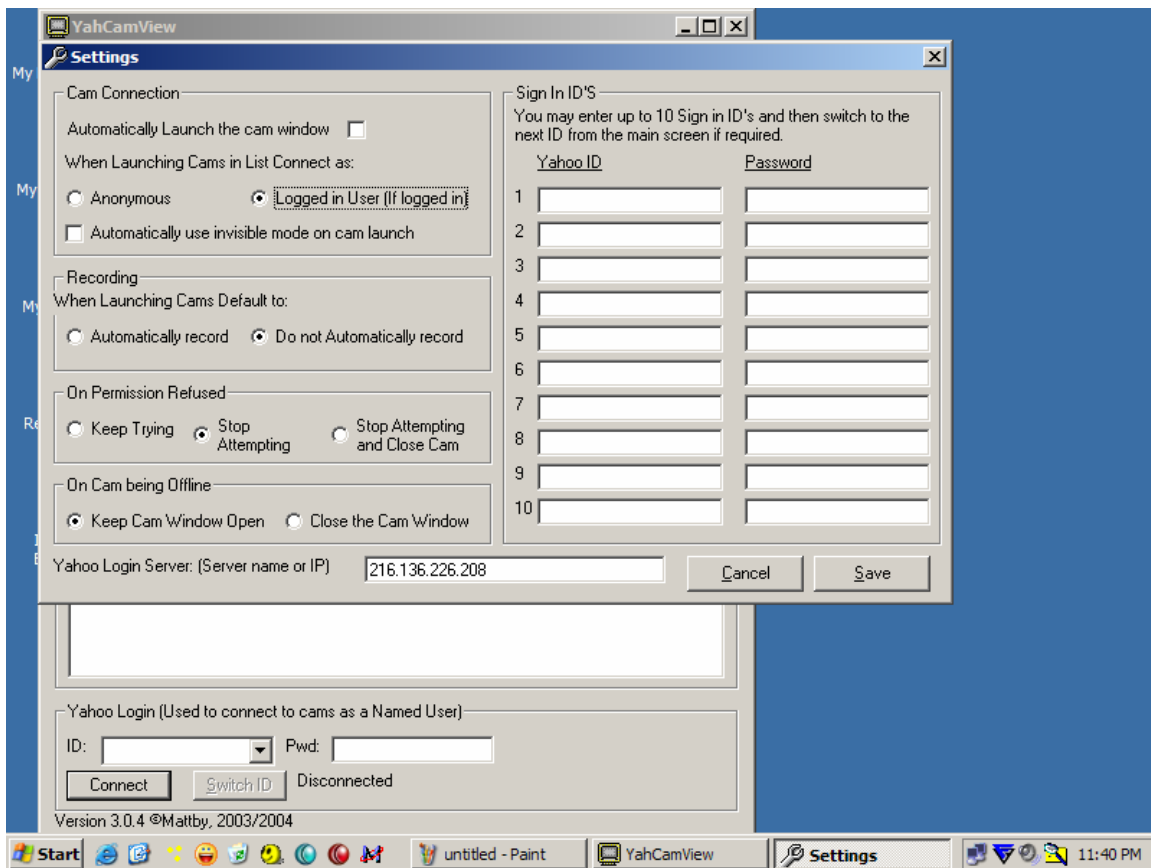
As soon as the program starts, remove the check mark from “Poll for Online Cams.” Do this every time you start the program.

Now slide the “Speed Control” down to “6%”.

High poll speeds will cause program errors. Each computer due to its own unique hardware configuration will have a different poll speed. The general rule is, the faster the computer, the lower the poll speed will have to be. I cannot run the “Poll” above 6-10% on my computer, which is an Intel based 3.2 gigahertz system, with a Gigabyte of memory.

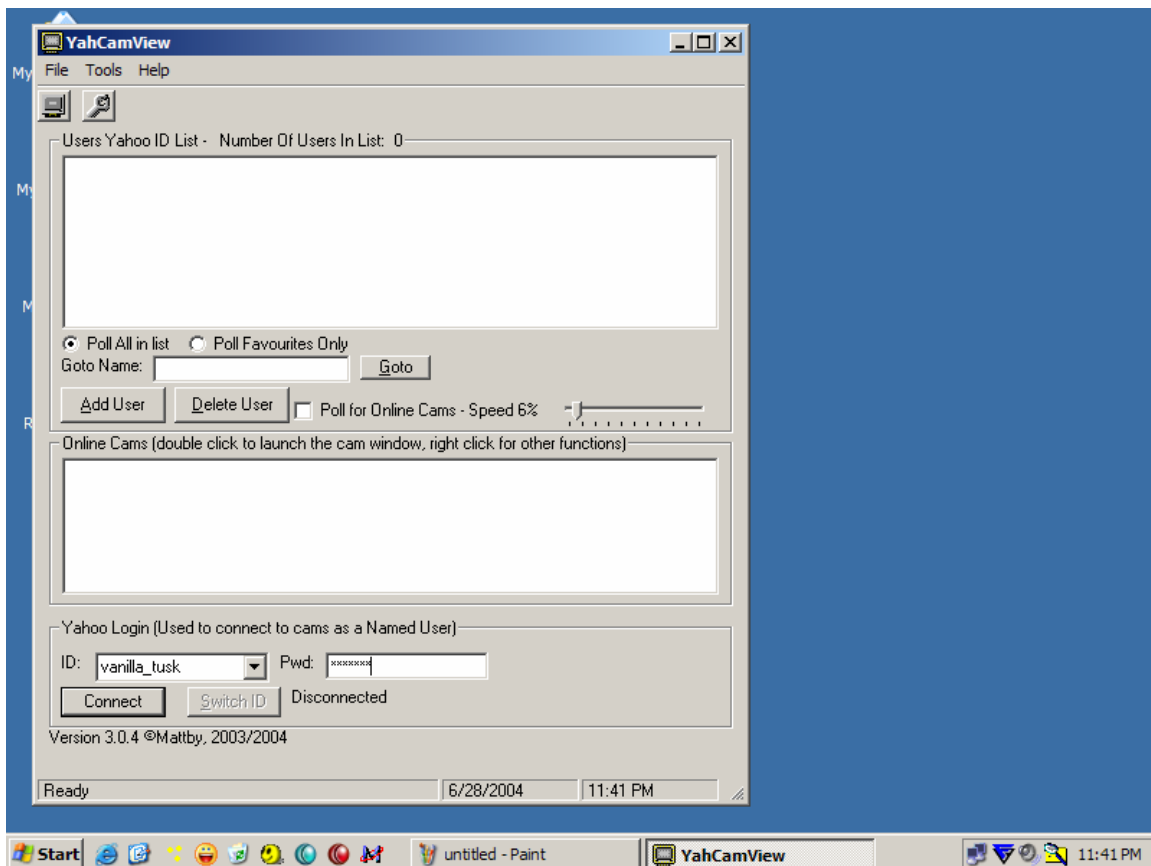


Go back into “Tools,” and then “Options” and verify the server address that you just changed is correct and has the IP address of: cs42.msg.dcn.yahoo.com and that all the other options look like the picture below this text.



Select “Cancel” if the server address is correct, or fix the settings if they are wrong and select SAVE. You will have to restart the program just as before if you make changes again.

DO NOT add login names or do anything else at this point.



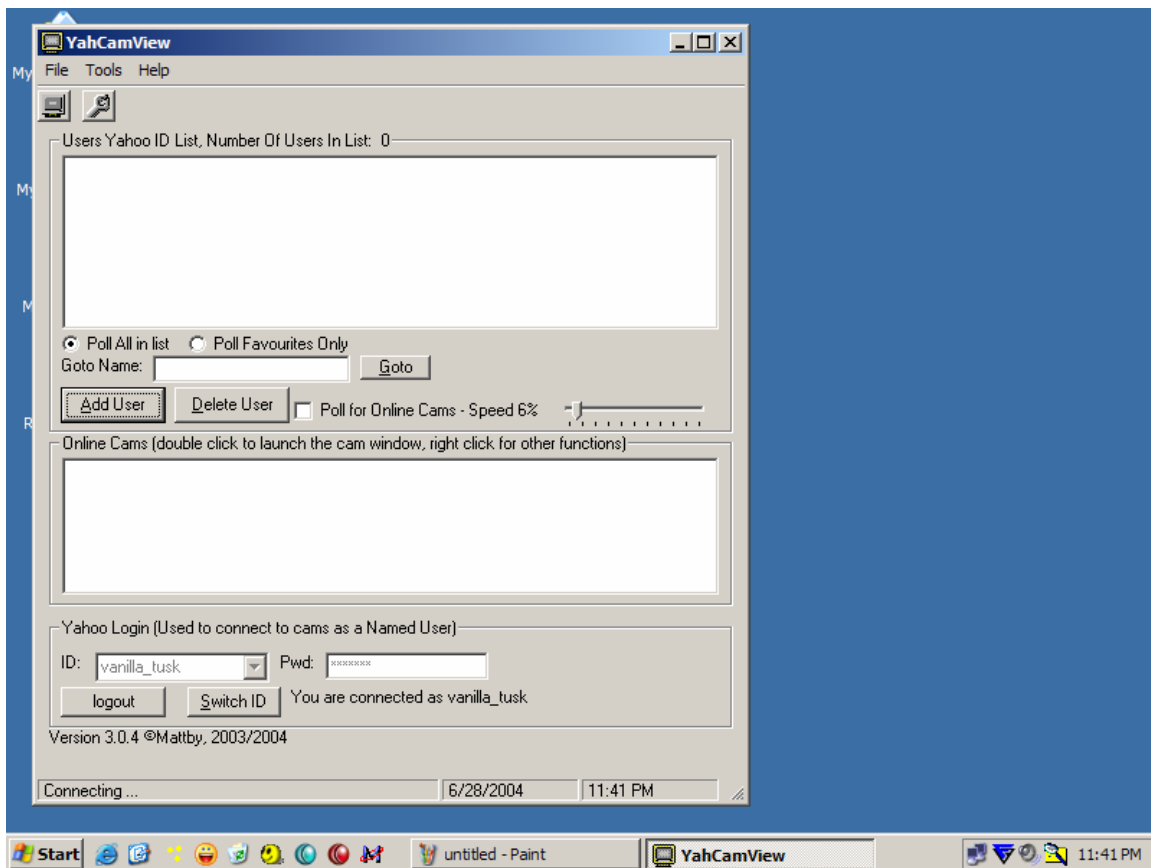
Make sure Messenger or any other Yahoo related programs are not running.

Under the “ID” field type in the name of valid Yahoo ID that belongs to you. Next, type the password for this ID in the “PWD” box.

This cannot be an ID you are currently logged into Messenger with. I recommend you close Messenger and type in the ID you have been using with it for test purposes.

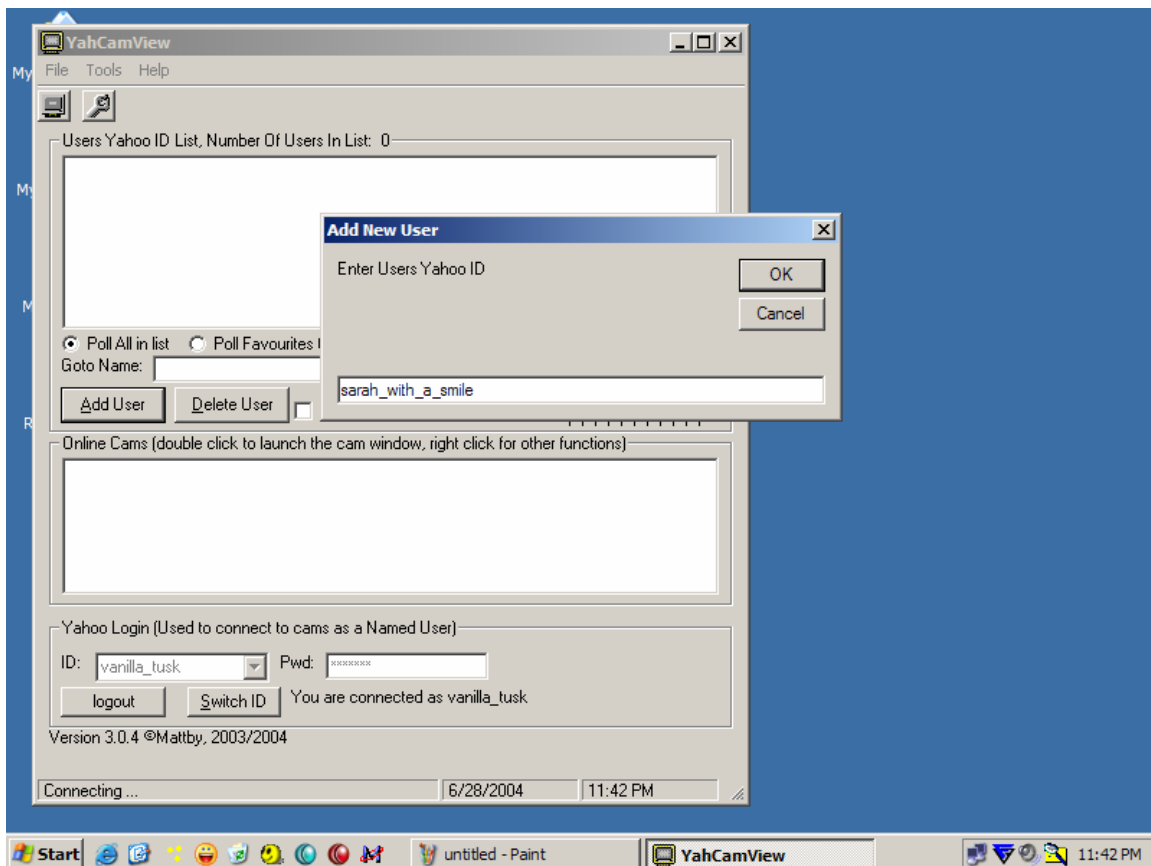
90% of the login problems are login/password errors (you typing it wrong, caps lock on etc). The other 10% is the server address in the options screen not being set correctly.

Click “Connect” and the program should say connected. Do not worry about the very bottom field reporting “Connecting”.



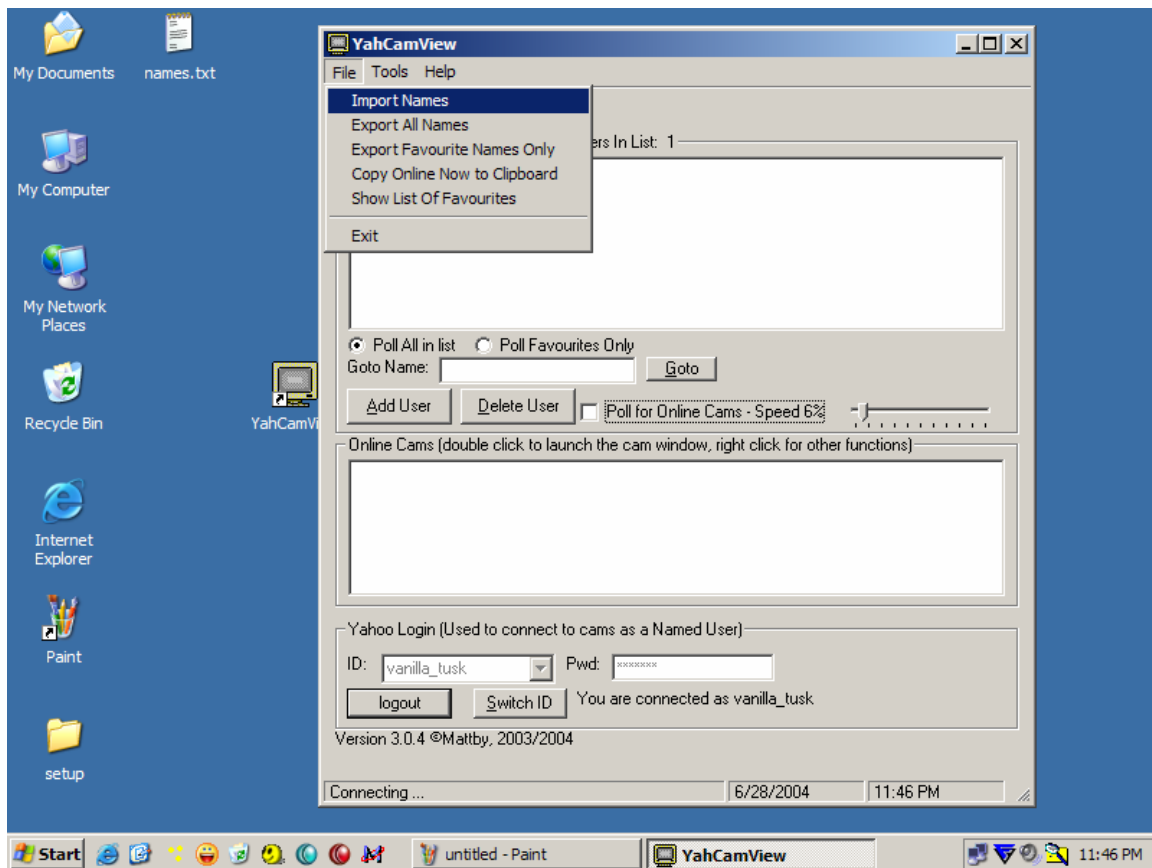
Click the “Add User” button. Type in the Cam Hoe user name of: sarah_with_a_smile.

This is how you manually add a User ID to the program.

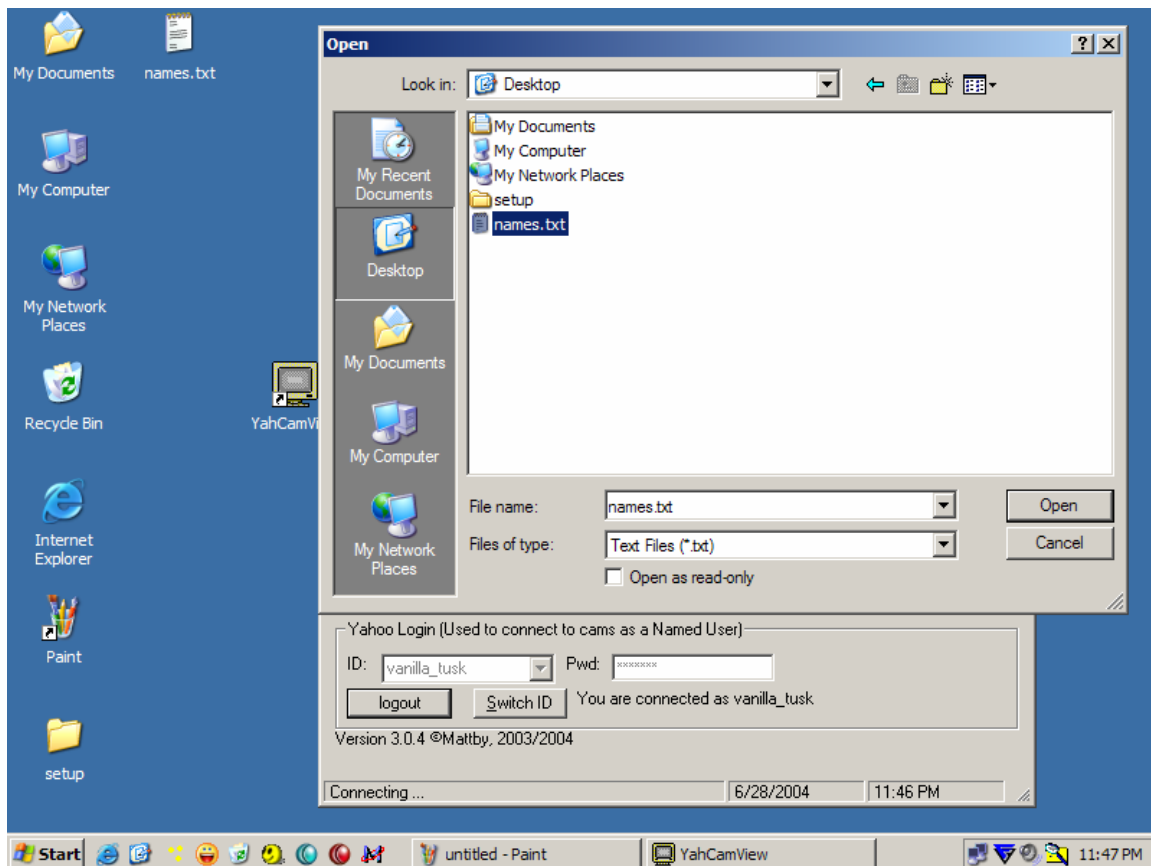


Next we are going to use the “Import” feature to add multiple names at one time.

Click “File” and then “Import Names”. You should have a text file called “names.txt” that I sent you. Browse to that file (It cannot still be in your mailbox, or inside of a zip file to browse to it, the file should be on your Desktop or a known location) and select it.



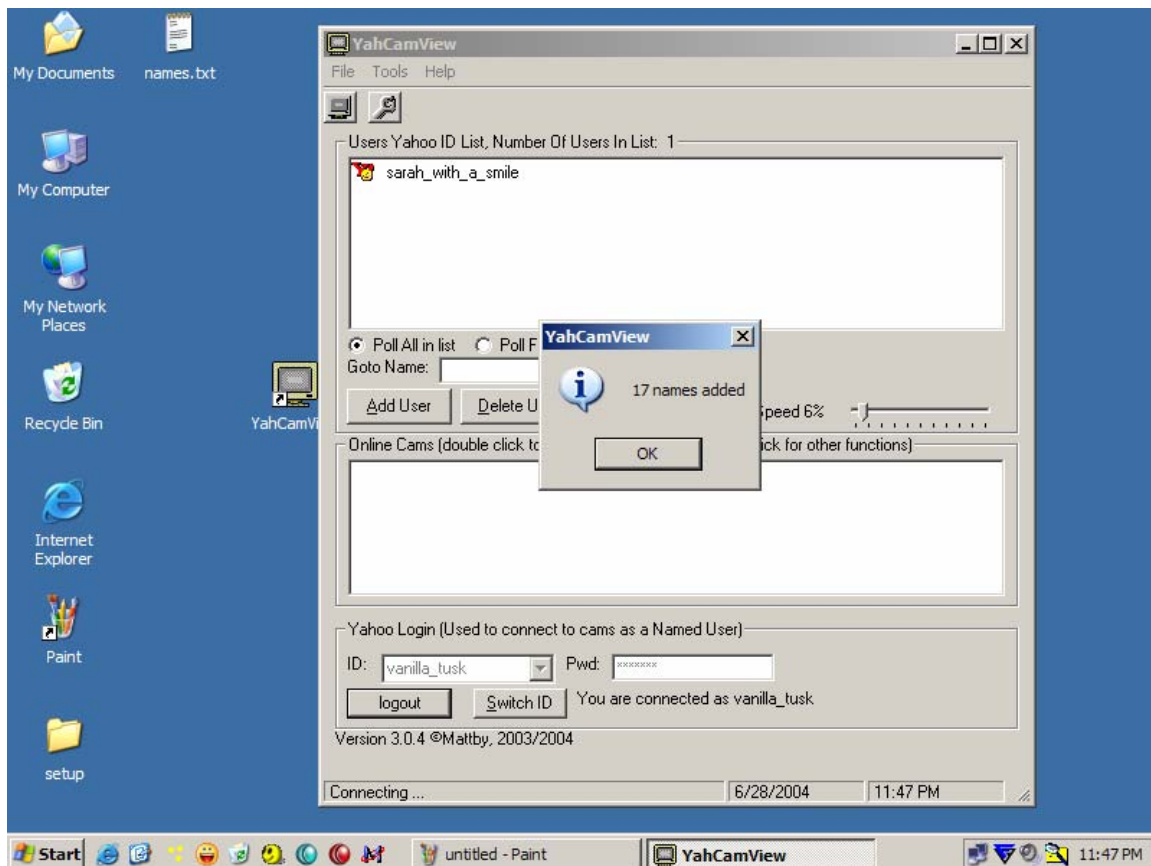
Highlight the names.txt file and select “Open”



Click “OK” for the report that 800 and some odd names were added.

The software does not work correctly if not provided any names at all, or only a very small number of names, such as one to two.

DO NOT try to run the program with only one or two names. It should run fine if you import the names.txt that I provided.



Exit the program after adding the names.

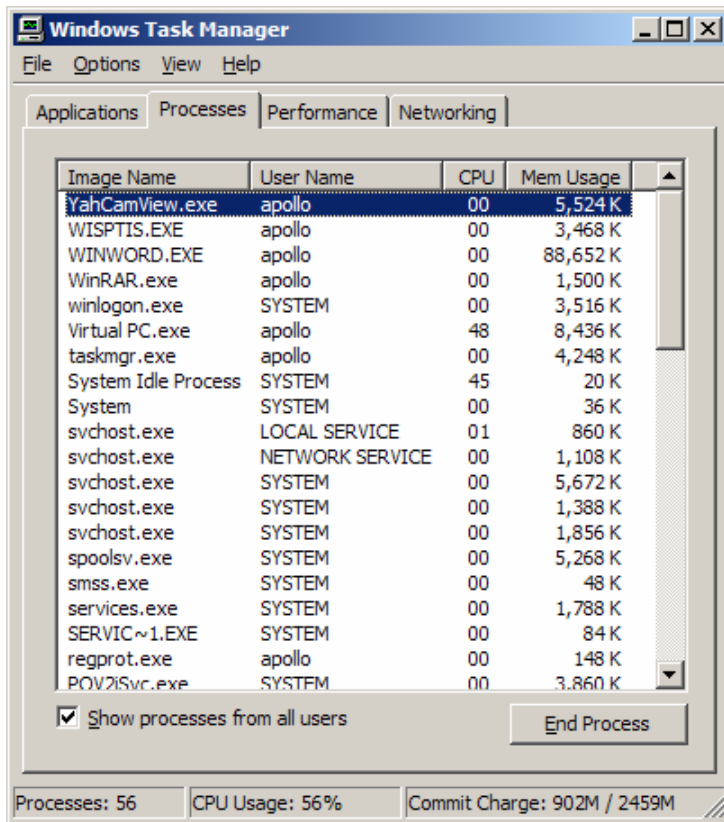
I have seen the program hang (stop responding) the first time names are added on some systems. If the program does not appear to have shut down properly, hit the “Control, ALT, and Delete” keys simultaneously to bring up the Windows Task Manager.

Select the “Processes” tab and look for “YahCamView”

If the YahCamView process is still running and the program has been closed, the program will not launch again, no matter how many times you click it.

If this happens, highlight “YahCamView” and select the “End Process” button.

Alternatively, you can log off, and then log back on. Logging off will end all processes that are not supposed to be running any longer.



The installation and configuration of YahCamView is now complete.

Start the program, and again, remember that you have to remove the “Poll for Online Cams” check mark whenever you launch the software.

Adjust the poll speed to 6% or experiment with what works for you. The higher the poll speed is, the faster it will search your list of names. The drawbacks are, on a fast PC it can literally shut down your Internet connection, or the program will do things such as crash when you launch cam windows.

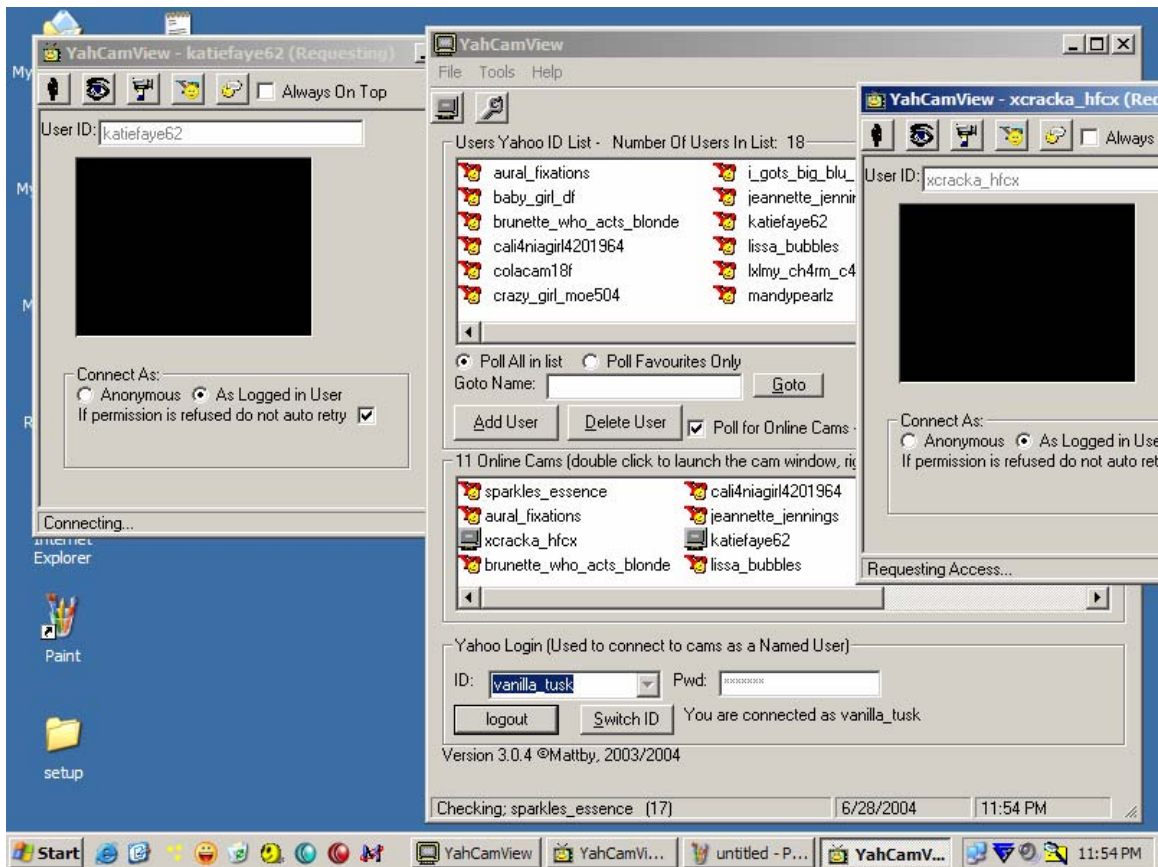
Place a check mark back into the “Poll for Online Cams” box after you have adjusted your search speed.

If the login ID is no longer present, add it again, and hit connect.

The program will now begin scanning the names you added during the import we performed.

Double clicking a name in the online cams window will launch the cam.

DO NOT MARK ANY NAMES AS FAVORITES! I have seen this cause the program to lose stability if you select names as favorites. The author never got the ‘Favorites’ feature working correctly.

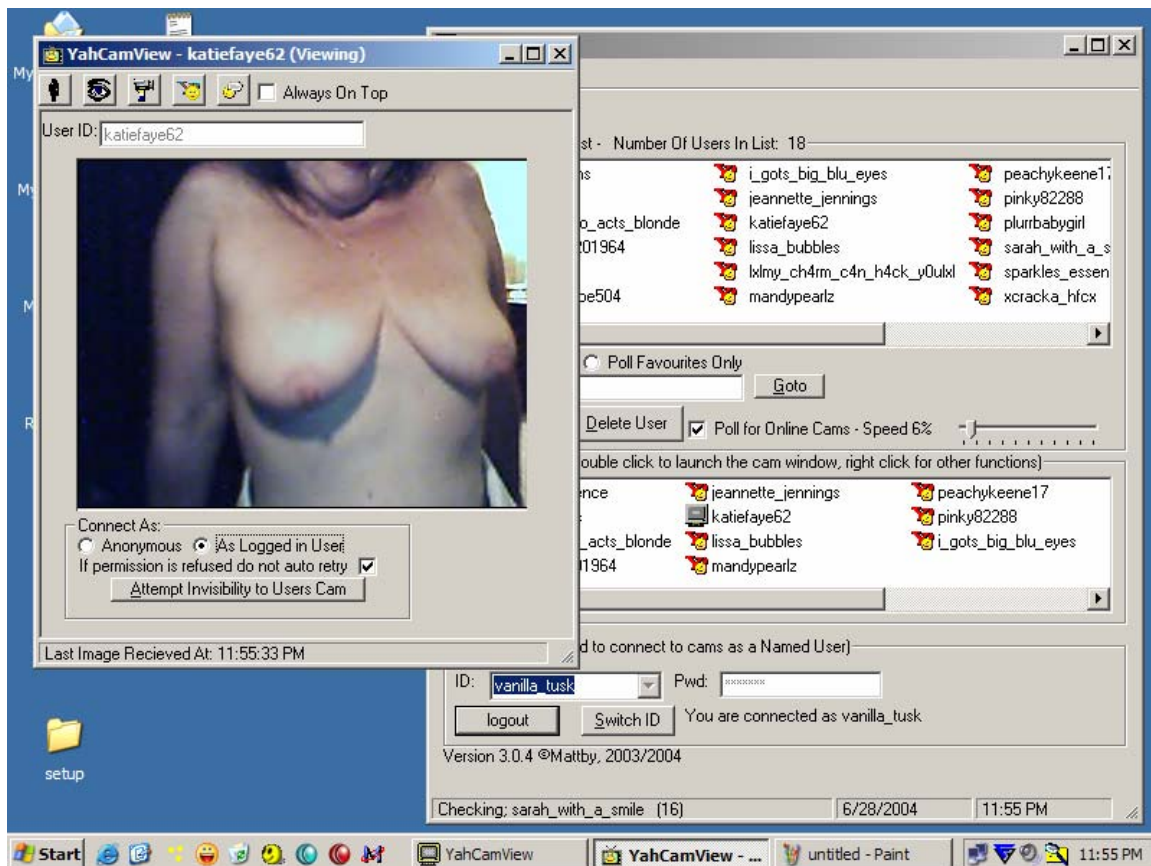


The test PC had a freshly loaded copy of Windows XP Professional with Service Pack 1A, and all the Windows Update patches applied.

Messenger 6 was installed on the system prior to installing YahCamView.

If you encounter errors, the first step I would try is to reboot the PC and go through the complete install process again. Several users have reported back to me that they corrected errors they were receiving after I suggested they do this. It worked.

Please remember that I stated clearly on my website that this software was intended for Windows XP and Windows 2000 computers. It does work on some Windows 98 and Millennium systems, but please do not contact me to help you with it if it does not work on yours. My advice before the purchase was not to do it. Running all the Windows Updates may solve your problems though.



KNOWN ISSUES:

If you run the program for long periods, the ID that is logged in may eventually time out on the Yahoo server. You will notice this if you try to launch a cam and by default it attempts to connect "Anonymously" instead of with the logged in ID. Simply hit the "Logout" Button and then "Connect" again if this happens.

I highly recommend that you back up your names from time to time by copying the "cdata.dat" file to another location. This file is really a text file, and it can be edited with Notepad if you know what you are doing working with text files.

You can add cam names you want to scan either manually, by importing them from text files, or by copying a new "cdata.dat" file into the install directory (C:\PROGRAM FILES\YAHCAMVIEW) while the program is "Not Running."

