

ANSI Roller Chain Sprockets & Bushings



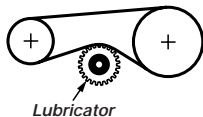
Double-Pitch Plain Bore Steel Sprockets

With two teeth every pitch, these sprockets are the choice for driving slow- to moderate-speed conveyors. All are made of steel and can be machined. They do not include keyways or set screws. Use with ANSI double-pitch, single-strand chain. Minimum bore size is the furnished size; you can enlarge bore to the maximum bore size. For information about sprockets, see page 912.

Additional Information: We can provide you with the length through bore as well as hub diameter for these sprockets. Fax us at 630-782-3800 and request **2444KAC** or go to our web site, www.mcmaster.com, and search for **2444KAC**.

No. of Teeth	For #2040 Chain, 1" Pitch			For #2050 Chain, 1 1/4" Pitch			For #2060H Chain, 1 1/2" Pitch			For #2080H Chain, 2" Pitch		
	Bore Size Min.	Bore Size Max.	Each	Bore Size Min.	Bore Size Max.	Each	Bore Size Min.	Bore Size Max.	Each	Bore Size Min.	Bore Size Max.	Each
15	5/8"	1 1/32"	2444K11	5/8"	1 3/32"	2444K57	3/4"	1 3/4"	2444K17	1"	2 3/32"	2444K22
17	5/8"	1 15/16"	2444K12	5/8"	1 3/4"	2444K27	3/4"	2 3/32"	2444K18	1"	2 3/4"	2444K23
21	5/8"	1 25/32"	2444K14	3/4"	2"	2444K58	3/4"	2 3/4"	2444K21	1"	2 3/4"	2444K83
23	5/8"	2"	2444K44	3/4"	2"	2444K28	3/4"	2 3/4"	2444K61	1"	2 3/4"	2444K25
24	5/8"	2 1/4"	2444K15	3/4"	2"	2444K51	3/4"	2 3/4"	2444K62	1"	2 3/4"	2444K26
28	5/8"	2 1/4"	2444K45	3/4"	2"	2444K31	3/4"	2 3/4"	2444K63	1 3/16"	3 1/4"	2444K86

Roller Chain Lubricator



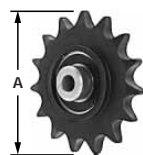
No need for sprays—this oil-impregnated, sprocket-shaped lubricator mounts to roller chain and rotates to deliver constant, uniform lubrication. And not only does it lubricate, it maintains chain tension and helps eliminate oil and grease contamination. Just mount it on the slack or return side of the chain; it has a 1/2" bore. Made of black polymer. Temperature range is 10° to 180° F.

To Order: Please specify chain pitch: ANSI No. 40, 50, 60, or 80.
1444K1 Each \$64.17

Nylon Idler Sprockets with Ball Bearings

The bearings in these sprockets allow them to rotate freely while controlling chain slack to maintain proper tension. Sprockets are light-weight glass-reinforced nylon, which offers tremendous wear and corrosion resistance. In addition, they're quieter than steel and don't require lubrication.

Sprockets are precision molded for excellent concentricity. Each includes an ABEC-1 rated steel ball bearing.



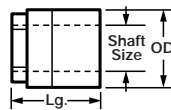
For ANSI Chain Size	Pitch	No. of Teeth (A)	5/8" Bore Each	3/4" Bore Each
40	1/2"	17	3" 8255K11 \$10.25	8255K31 \$7.80
50	5/8"	15	3 1/4" 8255K12 10.73	8255K32 8.29
60	3/4"	13	3 1/2" 8255K13 11.70	8255K33 9.26
80	1"	12	4 1/2" 8255K14 13.65	8255K34 11.21

Quick-Mount Keyless Bushings

Since there are no keys, cap screws, or other components to slow you down, you can torque up one of these bushings in just seconds. Match bushing OD to bore of your sprocket, pulley, or gear.

Each bushing has inner and outer sleeves. As you tighten the collar nut, the inner sleeve contracts onto the shaft while the outer sleeve expands to hold your component. Bushings accommodate shafts that are slightly out of round. They're quick and easy to install and remove.

Stainless steel bushings are made of Type 303 stainless steel.



Inch Sizes				Metric Sizes											
For Shaft Size	OD	Lg.	Steel	Stainless Steel	For Shaft Size, mm	OD	Lg., mm	Steel	Stainless Steel						
			Max. Torque, in.-lbs.	Each				Max. Torque, in.-lbs.	Each	Max. Torque, in.-lbs.	Each				
3/16"	5/8"	3/4"	100 5926K11	\$26.74	30	2308K11	\$38.40	106 2298K1	\$26.15	35	2324K11	\$38.40			
1/4"	5/8"	3/4"	150 5926K12	26.74	45	2308K12	38.40	141 2298K2	26.15	44	2324K12	38.40			
5/16"	3/4"	7/8"	200 5926K13	28.25	60	2308K13	40.57	177 2298K3	26.15	53	2324K13	38.40			
3/8"	3/4"	7/8"	250 5926K14	28.25	75	2308K14	40.57	203 2298K4	27.63	61	2324K14	40.57			
7/16"	7/8"	1"	300 5926K15	30.77	90	2308K15	44.19	230 2298K5	27.63	70	2324K15	40.57			
1/2"	1"	1"	350 5926K16	30.77	105	2308K16	44.19	265 2298K6	30.10	79	2324K16	44.19			
9/16"	1"	1 1/8"	400 5926K17	31.78	120	2308K17	45.64	300 2298K7	30.10	88	2324K17	44.19			
5/8"	1"	1 1/8"	450 5926K18	31.78	135	2308K18	45.64	345 2298K8	30.10	106	2324K18	44.19			
5/8"	1 1/2"	1 1/2"	1,750 5926K42	41.54	525	2308K21	62.30	389 2298K9	31.09	115	2324K19	45.64			
1 1/16"	1 1/2"	1 1/2"	2,000 5926K19	43.38	600	2308K22	62.30	398 2298K11	31.09	123	2324K21	45.64			
3/4"	1 1/4"	1 3/8"	1,500 5926K46	30.43	450	2308K19	45.64	15	38	38	1,593 2298K14	42.44	477	2324K24	62.30
3/4"	1 1/2"	1 1/2"	2,500 5926K2	43.38	750	2308K23	62.30	16	25.5	28.5	442 2298K12	31.09	132	2324K22	45.64
13/16"	1 3/4"	1 7/8"	2,600 5926K43	49.75	780	2308K24	74.62	16	38	38	1,752 2298K15	42.44	522	2324K25	62.30
7/8"	1 3/4"	1 7/8"	2,800 5926K22	46.76	840	2308K25	74.62	17	32	35	1,504 2298K13	31.09	407	2324K23	45.64
15/16"	1 3/4"	1 7/8"	3,100 5926K23	46.76	930	2308K26	74.62	17	38	38	1,947 2298K16	42.44	584	2324K26	62.30
1"	1 3/4"	1 7/8"	3,500 5926K24	46.76	1,050	2308K27	74.62	18	38	38	2,345 2298K17	42.44	708	2324K27	62.30
1 1/16"	2"	2 1/4"	4,000 5926K44	64.24	1,200	2308K28	96.35	19	38	38	2,495 2298K18	42.44	752	2324K28	62.30
1 1/8"	2"	2 1/4"	4,600 5926K25	60.38	1,380	2308K29	96.35	20	45	47.5	2,566 2298K19	50.83	770	2324K29	74.62
1 3/16"	2"	2 1/4"	5,200 5926K45	64.24	1,560	2308K31	96.35	22	45	47.5	2,787 2298K21	50.83	840	2324K31	74.62
1 1/4"	2"	2 1/4"	6,000 5926K26	60.38	1,800	2308K32	96.35	24	45	47.5	3,363 2298K22	50.83	1,008	2324K32	74.62
1 5/16"	2 3/8"	2 3/4"	6,200 5926K46	79.21	1,860	2308K33	118.81	25	45	47.5	3,451 2298K23	50.83	1,035	2324K33	74.62
1 3/8"	2 3/8"	2 3/4"	6,400 5926K27	74.46	1,920	2308K34	118.81	28	51	57	4,381 2298K24	65.63	1,318	2324K34	96.35
1 7/16"	2 3/4"	2 3/4"	6,700 5926K47	79.21	2,010	2308K35	118.81	30	51	57	5,133 2298K25	65.63	1,540	2324K35	96.35
1 1/2"	2 3/8"	2 3/4"	7,000 5926K28	74.46	2,100	2308K36	118.81	32	51	57	6,018 2298K26	65.63	1,805	2324K36	96.35
1 9/16"	2 5/8"	3 1/8"	8,000 5926K48	98.53	2,400	2308K37	147.79	34	60.5	70	6,283 2298K27	80.93	1,885	2324K37	118.81
1 5/8"	2 5/8"	3 1/8"	8,500 5926K29	92.62	2,550	2308K38	147.79	35	60.5	70	6,416 2298K28	80.93	1,929	2324K38	118.81
1 11/16"	2 5/8"	3 1/8"	9,250 5926K49	98.53	2,775	2308K39	147.79	36	60.5	70	6,638 2298K29	80.93	1,991	2324K39	118.81
1 3/4"	2 5/8"	3 1/8"	10,000 5926K3	92.62	3,000	2308K41	147.79	38	60.5	70	6,992 2298K31	80.93	2,097	2324K41	118.81
1 13/16"	2 7/8"	3 9/16"	11,000 5926K71	121.23	3,300	2308K42	181.84	40	67	79.5	7,965 2298K32	100.67	2,389	2324K42	147.79
1 7/8"	2 7/8"	3 9/16"	11,750 5926K31	109.57	3,525	2308K43	181.84	42	67	79.5	8,850 2298K33	100.67	2,655	2324K43	147.79
1 15/16"	2 7/8"	3 9/16"	12,750 5926K72	121.23	3,825	2308K44	181.84	45	73	90.5	10,355 2298K34	123.86	3,106	2324K44	181.84
2"	2 7/8"	3 9/16"	14,000 5926K32	109.57	4,200	2308K45	181.84	48	73	90.5	11,992 2298K35	123.86	3,602	2324K45	181.84
2 1/4"	3 1/8"	3 3/4"	15,000 5926K73	201.40	4,500	2308K46	302.10	50	73	90.5	13,363 2298K36	123.86	4,009	2324K46	181.84
2 1/2"	3 3/8"	3 7/8"	16,000 5926K74	224.59	4,800	2308K47	336.88	55	80	95.3	14,603 2298K37	123.86	4,381	2324K47	302.10
								60	86	98.4	15,400 2298K38	229.47	4,620	2324K48	336.88