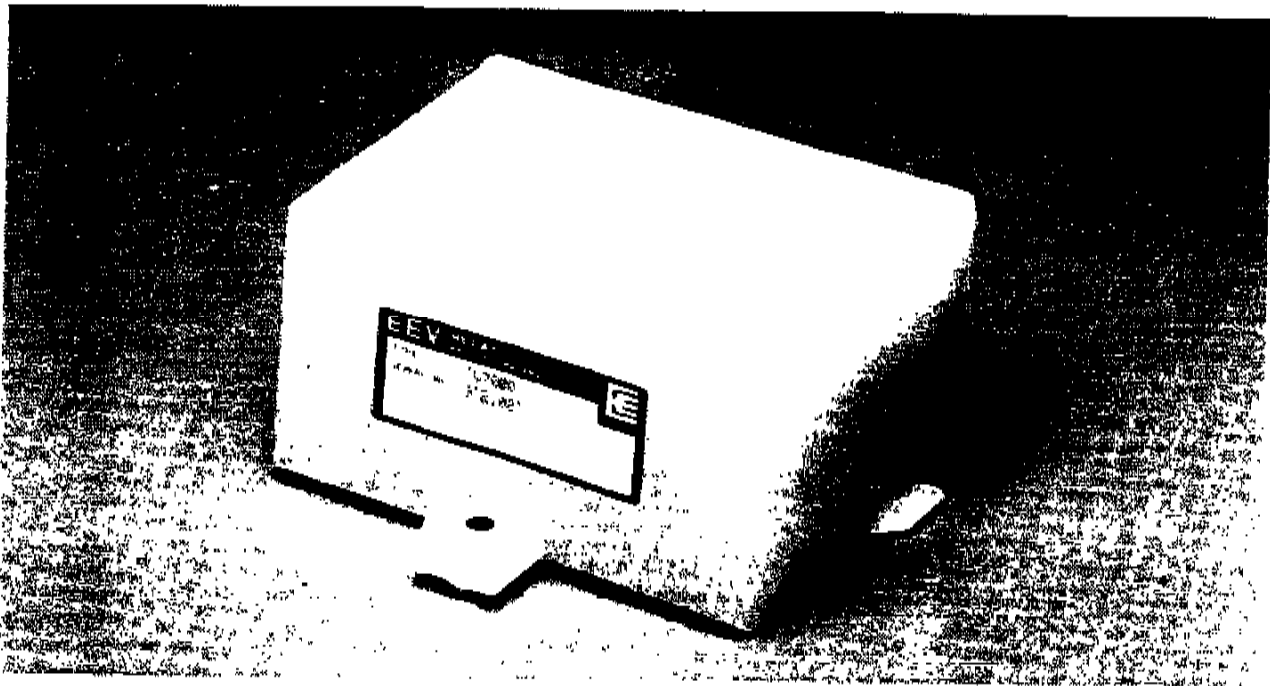


**Gas-Filled Relay**

**JG7000**

**EEV**



**DESCRIPTION**

A double-pole change over relay mounted inside a plastic enclosure which is filled with an insulating gas at low pressure. This relay has been specifically developed for use in medical defibrillators, where reliability and safety are of paramount importance

**MAXIMUM RATINGS**

**Contact Ratings**

Voltage (peak d.c.)	6	kV
N/O contacts:		
peak current into 50 Ω load	50	A
fault current into short circuit	100	A
pulse energy	360	J
N/C contacts current	1	A

**GENERAL DATA**

**Electrical**

Operate time (at 12 V d.c., 25 °C)	15	ms max
Contact resistance:		
N/O contacts	0.5	Ω typical
	1.0	Ω max
N/C contacts	2.0	Ω max
Coil voltage	12	V d.c. nom
Pull-in voltage (at 25 °C)	9	V d.c. max
Drop-out voltage (at 25 °C)	0.5	V d.c. min
Coil resistance (at 25 °C)	2.6 to 3.0	Ω
Coil-to-ground insulation		
(test only at 500 V)	30	MΩ
Proof test voltage (peak) (test only)	10	kV d.c.
Proof test leakage (at 10 kV)	10	μA max

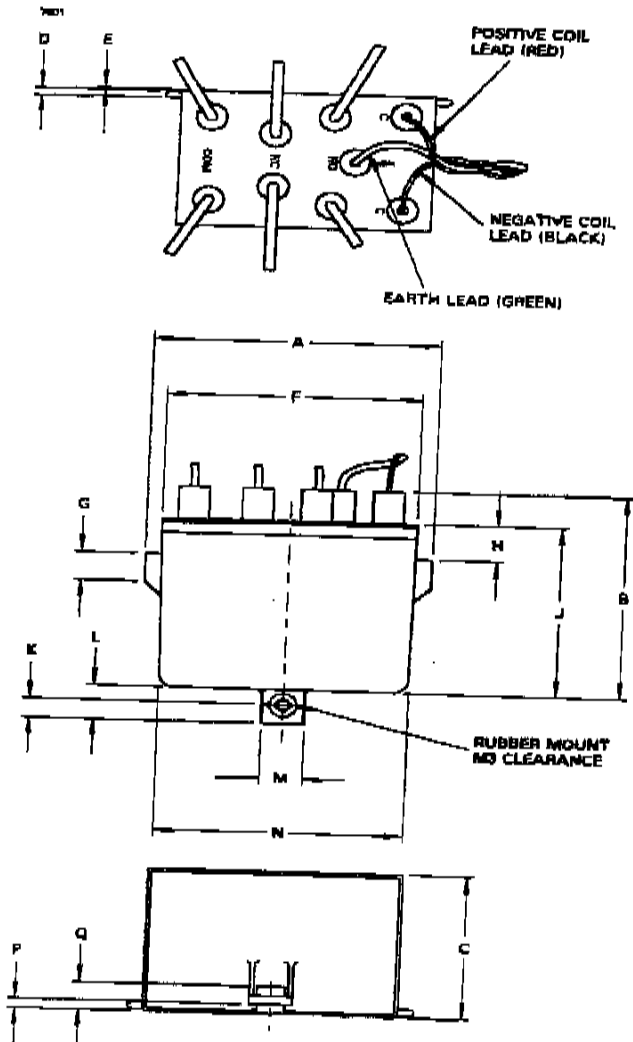
**Mechanical**

Overall dimensions		see outline
Net weight	250	g approx
Mounting position		any
Ambient temperature range		
(operating)	-5 to +65	°C
Operational life (360 J discharge		
into 50 Ω load)	2000	min
	10000	typical

**EEV**

Carholme Road, Lincoln LN1 1SF, England.  
 Telephone: (0522) 526352 Telex: 56114 Fax: (0522) 545140  
 Subsidiary of the General Electric Company, p.l.c. of England

**OUTLINE (All dimensions without limits are nominal)**



Ref	Millimetres	Inches
A	83.0	3.268
B	69.0	2.717
C	50.4 max	1.984 max
D	2.75	0.108
E	0.50	0.020
F	76.0 max	2.992 max
G	9.50	0.374
H	12.0	0.472
J	57.0	2.244
K	6.37	0.251
L	11.5	0.453
M	12.7	0.500
N	74.0	2.913
P	3.00	0.118
Q	9.00	0.354

Inch dimensions have been derived from millimetres.

note: This Relay has a small amount of SF6 added before sealing. Do not breathe in any vapor or in any way destroy the hermetic seal on the relay. Consult with a manufacturer of this material for instructions on proper handling & safety precautions.

Whilst EEV has taken care to ensure the accuracy of the information contained herein it accepts no responsibility for the consequences of any use thereof and also reserves the right to change the specification of goods without notice. EEV accepts no liability beyond that set out in its standard conditions of sale in respect of infringement of third party patents arising from the use of tubes or other devices in accordance with information contained herein.